

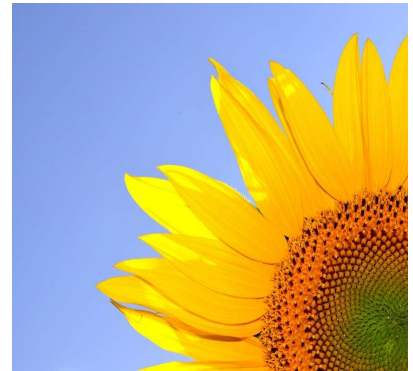


Monthly Newsletter

February 2025

February at Tweed Heads

This month we're setting goals and taking steps towards independence and inclusion! Whether it's learning new skills, building confidence, or connecting with others, we're here to support your journey. Let's make February a month of progress!



PTBL BIRTHDAYS

We wish everyone who has a birthday this month a VERY Happy Birthday and we hope that you enjoy your special day!

CaZ 10th

De Wet 14th



Website:

www.ptbl.com.au

Contact:

1300 702 845

Email:

hello@ptbl.com.au



Community Events:

How to Draw a dinosaur

When: Tuesday 4th February 2025

Where: Tweed Regional Museum

Time: 10am – 4pm



Physical Disability Awareness Day

When: Sunday February 2nd 2025

Where: Online via Zoom Ipswich

Time: 12pm

LGBTQIA+ People with Disability, Free to Be Proud

When: Wednesday 19 February 2025

Time: 1:00pm – 03:30pm NSW

Where: Zoom (Access link will be sent closer to the event)



Website:

www.ptbl.com.au

Contact:

1300 702 845

Email:

hello@ptbl.com.au



January 2025 recap: Photo edition



What another amazing year smashing goals and living our better lives at Pathways!



REGISTERED
NDIS
PROVIDER

Website:

www.ptbl.com.au

Contact:

1300 702 845

Email:

hello@ptbl.com.au